



MULTI-USE PORTABLE

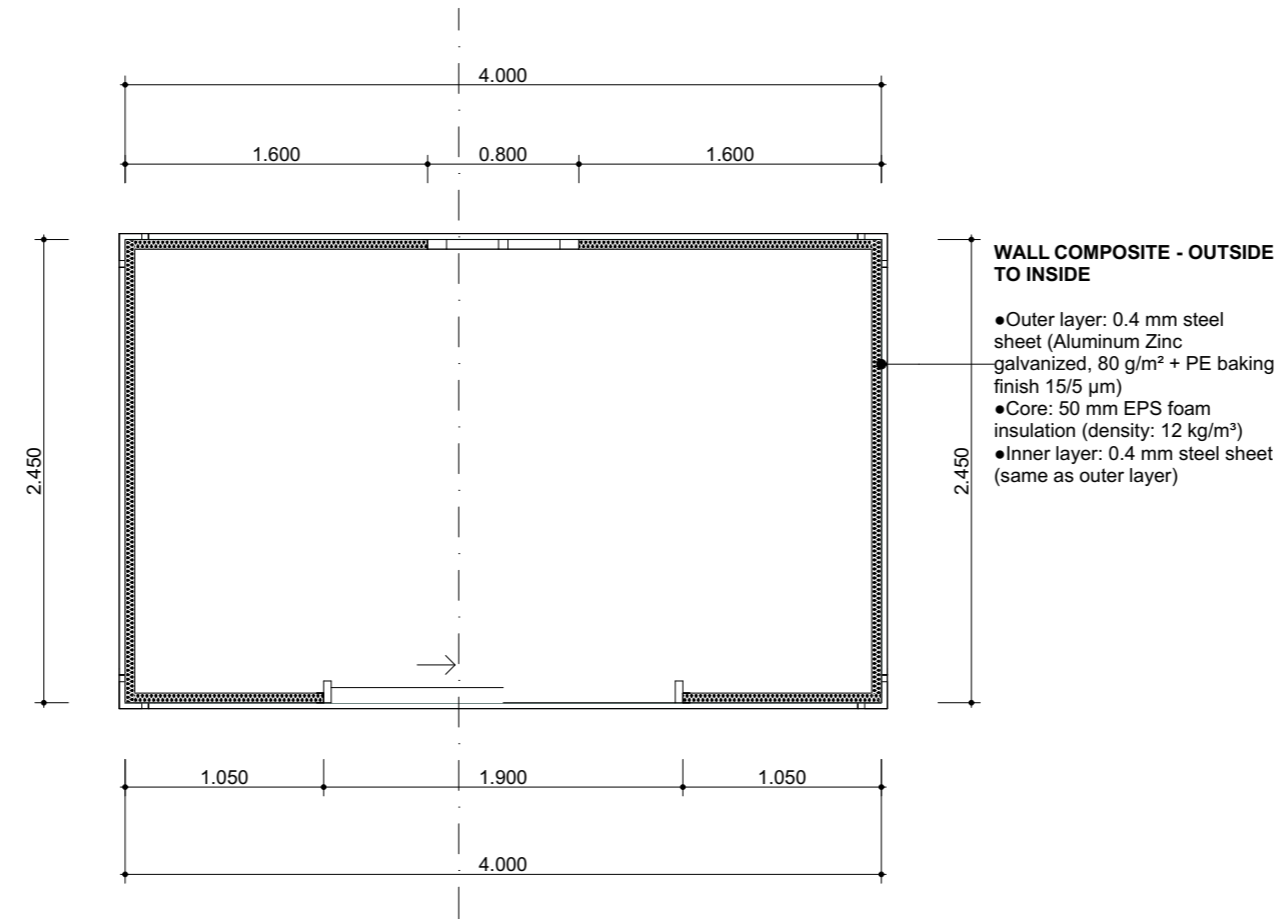
Floor Plans & Elevations

NOTE: These drawings are indicative only. For site-specific drawings that match your wind and BAL requirements, please contact us. These drawings include engineering for piers / footings and structural connections to the modular subframe base for 3 soil conditions – for site specific soil class an extra fee would be incurred. For sloping or problematic sites, you will need a survey plan, soil test and slope report before contacting us for site specific engineering – fees apply. Standard drawings and engineering are included in the price. Any site-specific investigations are your responsibility.

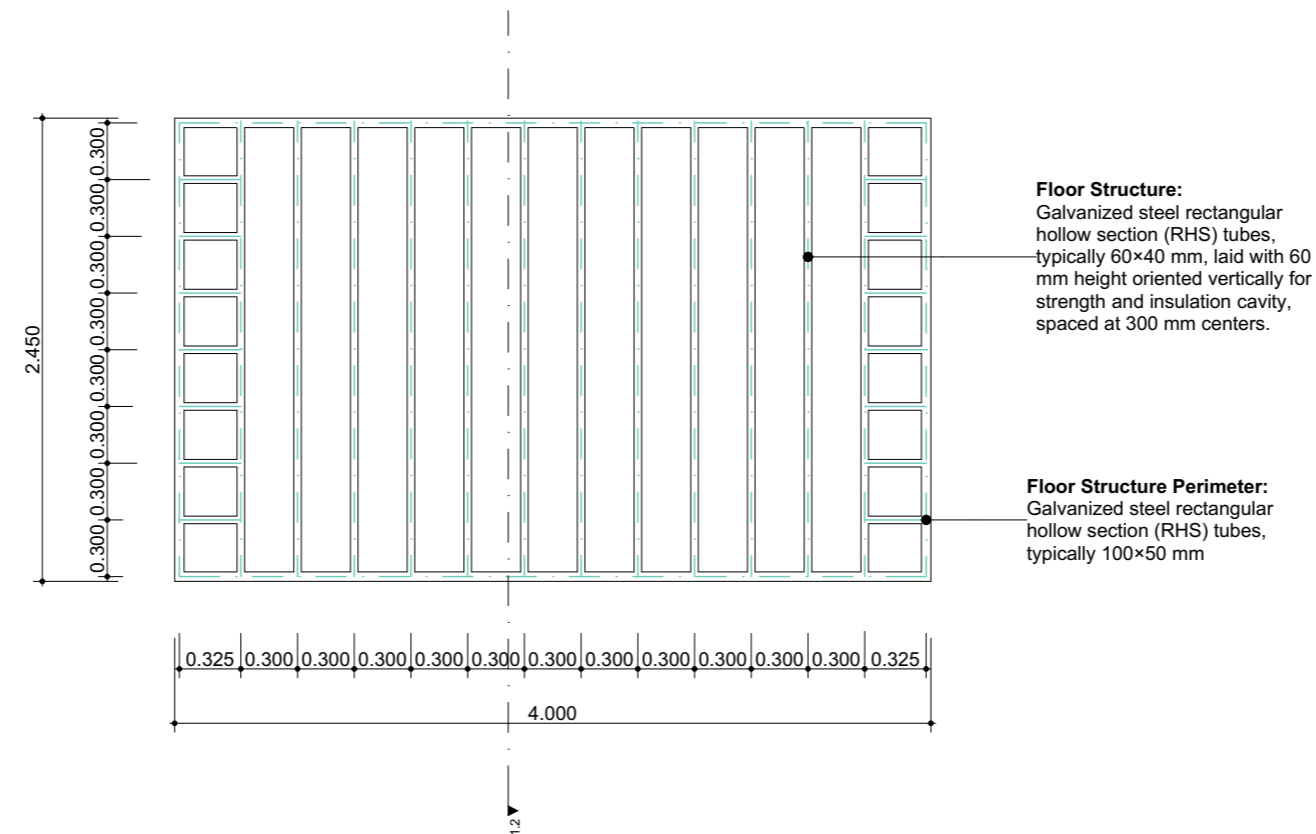


UNIT 3

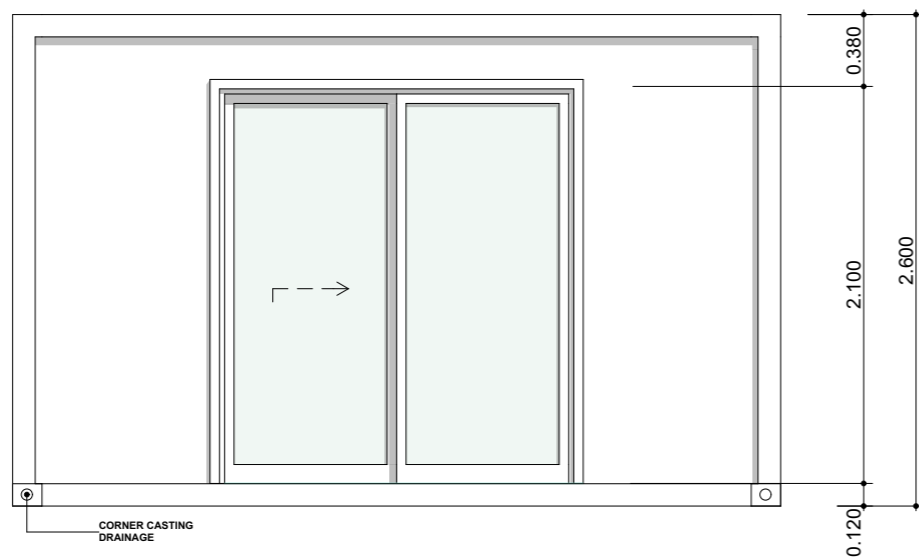
2.45x4.00



0. Ground Floor (3) 1:40



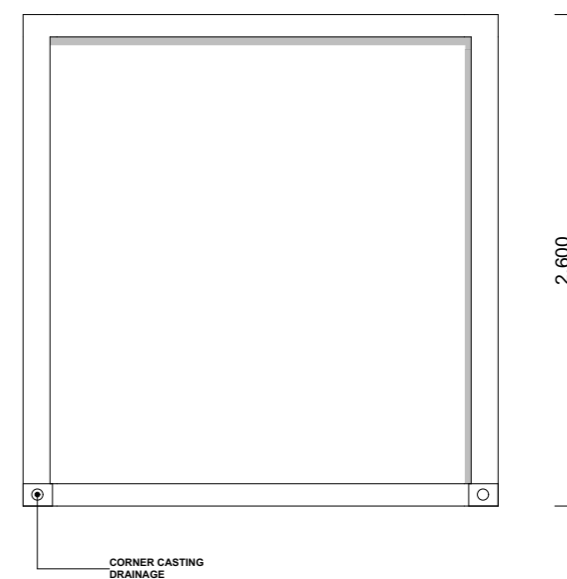
-1. BASE DRAWING 1:40



3S2

SOUTH ELEVATION

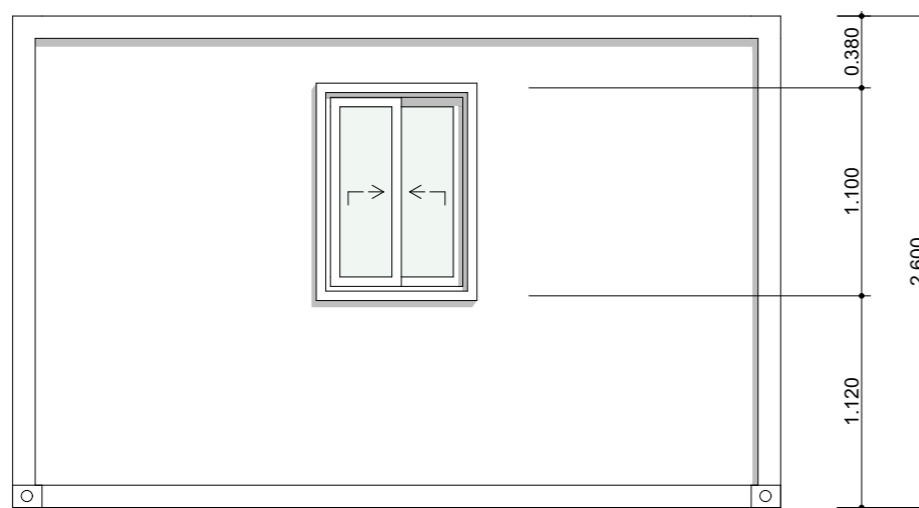
1:40



3W2

WEST ELEVATION

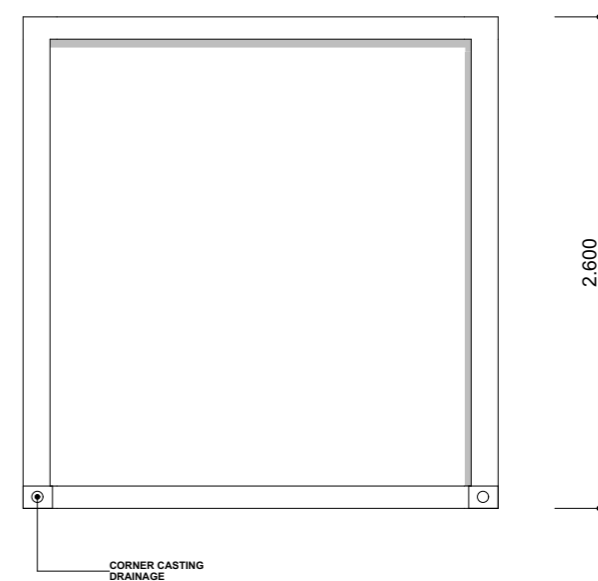
1:40



3N2

NORTH ELEVATION

1:40



3E2

EAST ELEVATION

1:40

