



MULTI-USE PORTABLE

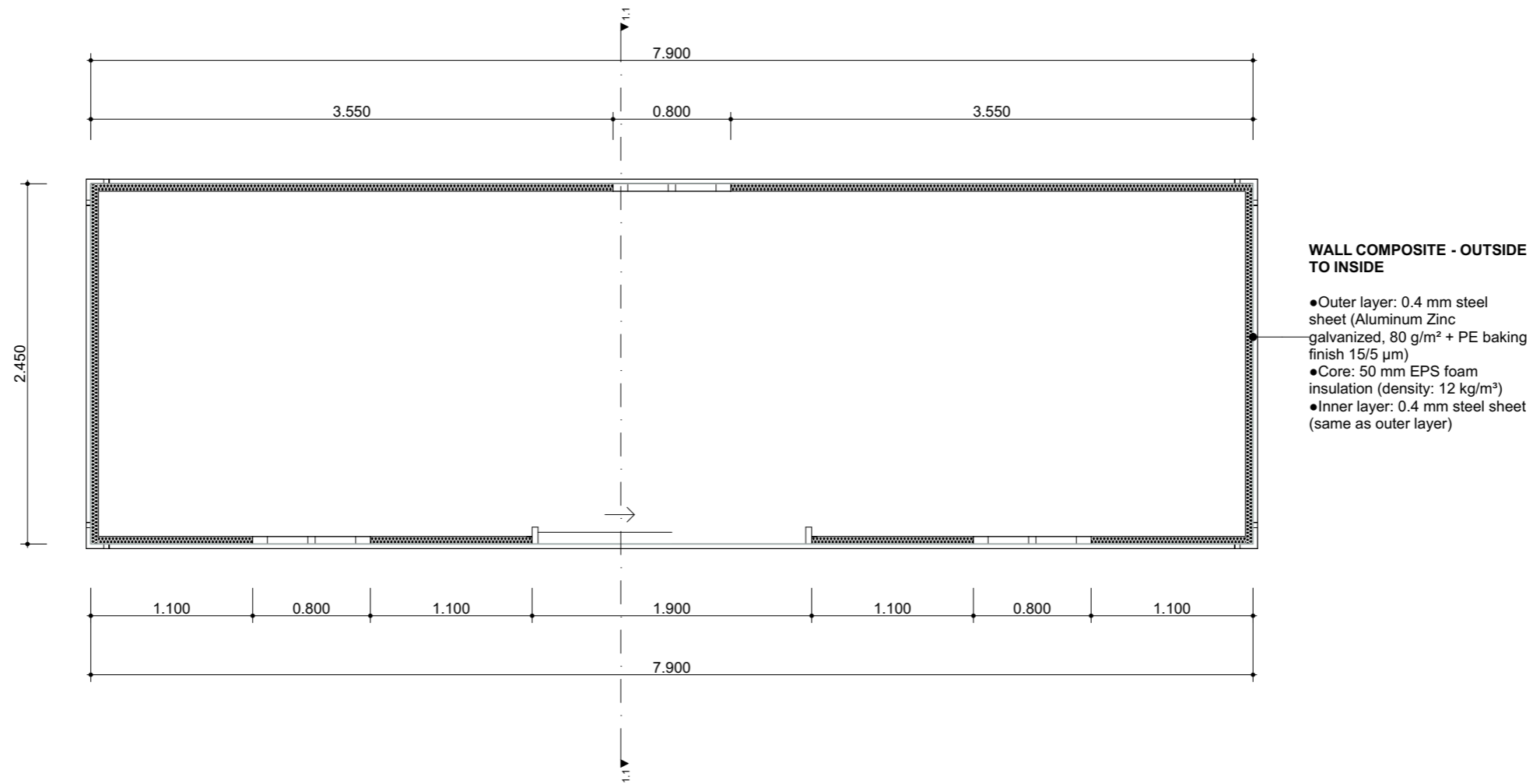
Floor Plans & Elevations

NOTE: These drawings are indicative only. For site-specific drawings that match your wind and BAL requirements, please contact us. These drawings include engineering for piers / footings and structural connections to the modular subframe base for 3 soil conditions – for site specific soil class an extra fee would be incurred. For sloping or problematic sites, you will need a survey plan, soil test and slope report before contacting us for site specific engineering – fees apply. Standard drawings and engineering are included in the price. Any site-specific investigations are your responsibility.

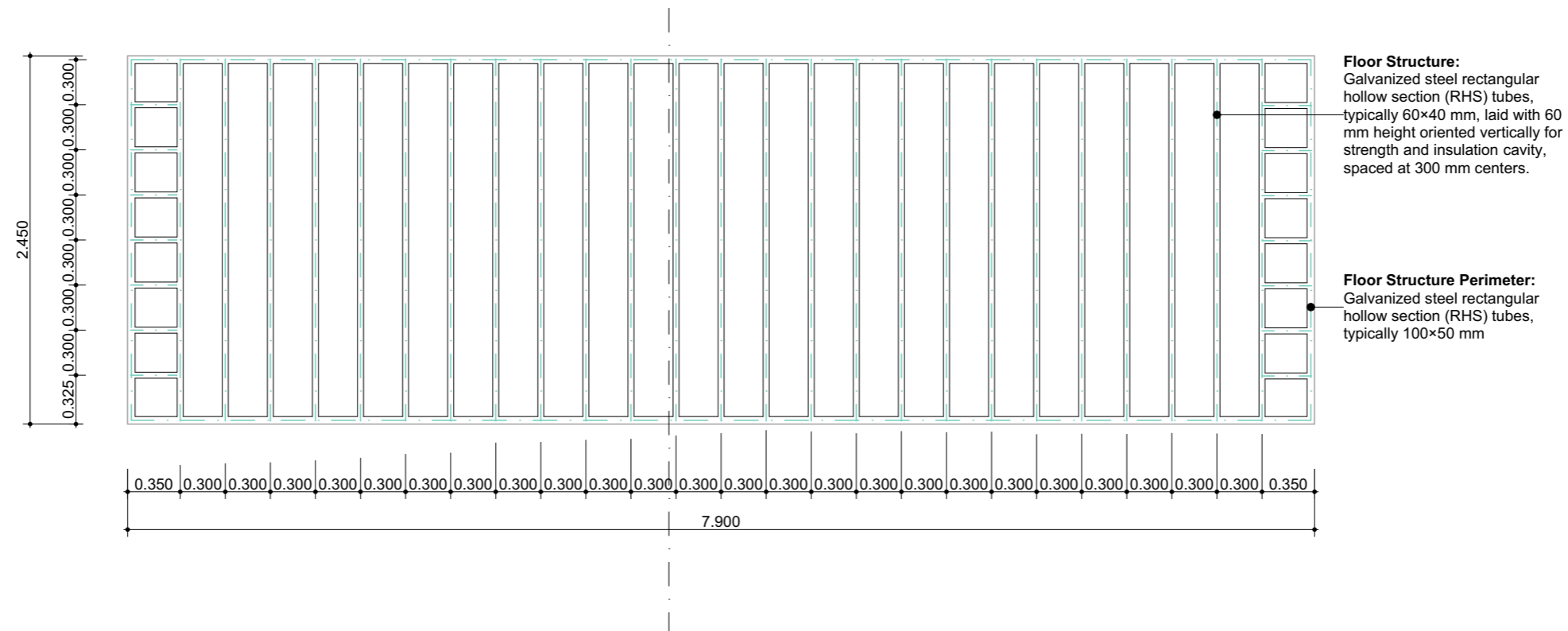


UNIT 1

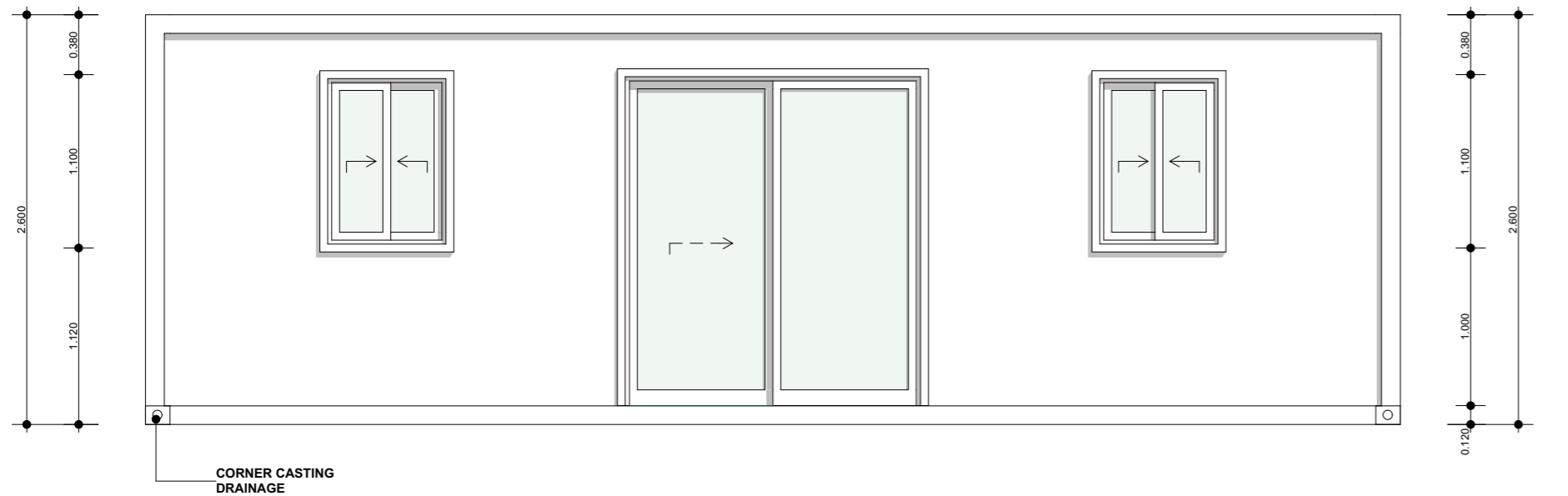
2.45x7.90



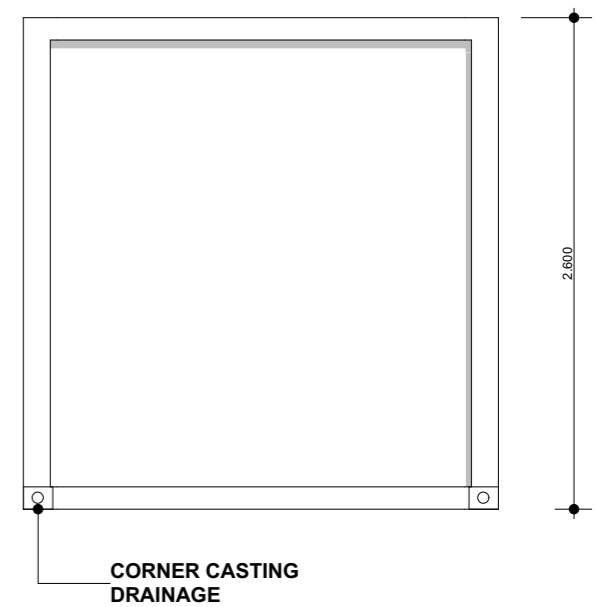
0. FLOORPLAN 1:40



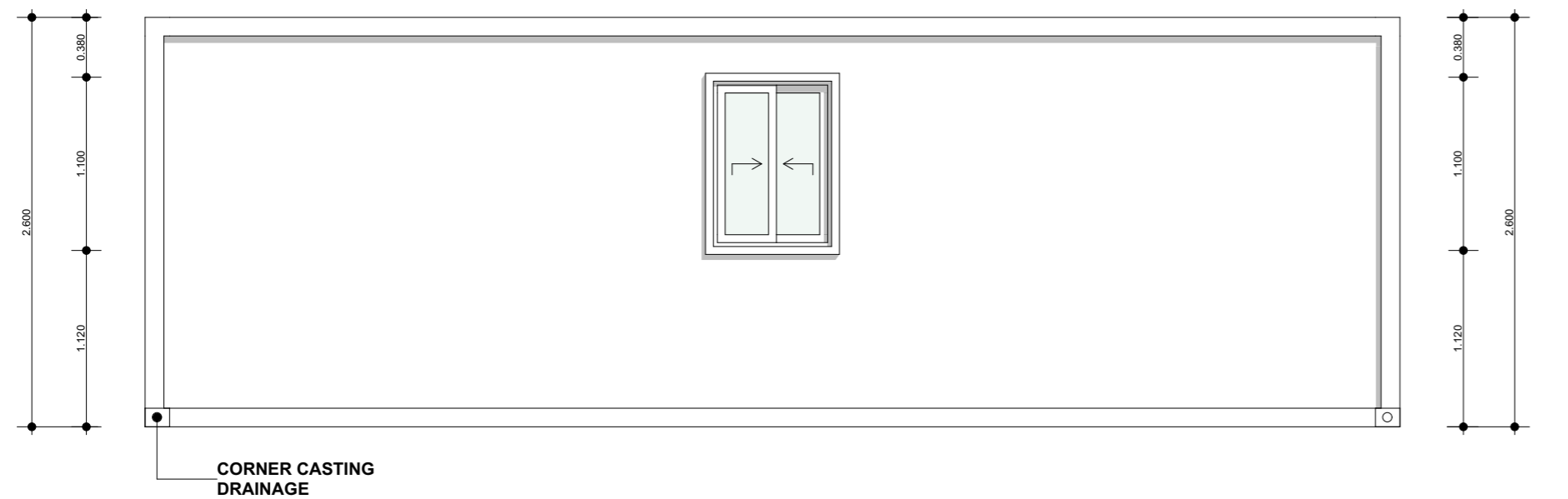
-1. BASE DRAWING 1:40



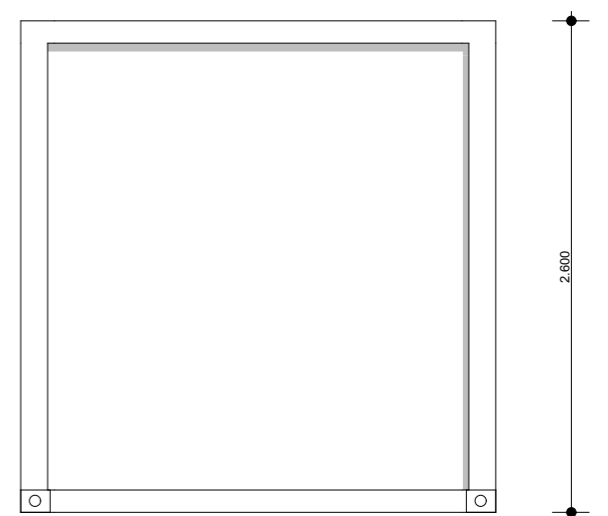
1S SOUTH ELEVATION 1:40



1E EAST ELEVATION 1:40



1N NORTH ELEVATION 1:40



1W WEST ELEVATION 1:40

